

**LY96 Antibody (C-term)**  
**Affinity Purified Rabbit Polyclonal Antibody (Pab)**  
**Catalog # AP17412b****Specification**

---

**LY96 Antibody (C-term) - Product Information**

Application	WB,E
Primary Accession	<a href="#">O9Y6Y9</a>
Other Accession	<a href="#">NP_056179.2</a>
Reactivity	Human
Host	Rabbit
Clonality	Polyclonal
Isotype	Rabbit IgG
Calculated MW	18546
Antigen Region	103-132

**LY96 Antibody (C-term) - Additional Information****Gene ID** 23643**Other Names**

Lymphocyte antigen 96, Ly-96, ESOP-1, Protein MD-2, LY96, ESOP1, MD2

**Target/Specificity**

This LY96 antibody is generated from rabbits immunized with a KLH conjugated synthetic peptide between 103-132 amino acids from the C-terminal region of human LY96.

**Dilution**

WB~~1:1000

E~~Use at an assay dependent concentration.

**Format**

Purified polyclonal antibody supplied in PBS with 0.09% (W/V) sodium azide. This antibody is purified through a protein A column, followed by peptide affinity purification.

**Storage**

Maintain refrigerated at 2-8°C for up to 2 weeks. For long term storage store at -20°C in small aliquots to prevent freeze-thaw cycles.

**Precautions**

LY96 Antibody (C-term) is for research use only and not for use in diagnostic or therapeutic procedures.

**LY96 Antibody (C-term) - Protein Information****Name** LY96**Synonyms** ESOP1, MD2

**Function** Binds bacterial lipopolysaccharide (LPS) (PubMed:[17569869](#), PubMed:[17803912](#)). Cooperates with TLR4 in the innate immune response to bacterial lipopolysaccharide (LPS), and with TLR2 in the response to cell wall components from Gram-positive and Gram-negative bacteria (PubMed:[11160242](#), PubMed:[11593030](#)). Enhances TLR4-dependent activation of NF-kappa-B (PubMed:[10359581](#)). Cells expressing both LY96 and TLR4, but not TLR4 alone, respond to LPS (PubMed:[10359581](#)).

#### Cellular Location

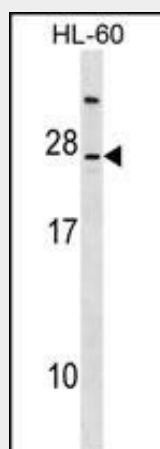
Secreted, extracellular space. Secreted Note=Retained in the extracellular space at the cell surface by interaction with TLR4 (PubMed:[10359581](#)).

#### LY96 Antibody (C-term) - Protocols

Provided below are standard protocols that you may find useful for product applications.

- [Western Blot](#)
- [Blocking Peptides](#)
- [Dot Blot](#)
- [Immunohistochemistry](#)
- [Immunofluorescence](#)
- [Immunoprecipitation](#)
- [Flow Cytometry](#)
- [Cell Culture](#)

#### LY96 Antibody (C-term) - Images



LY96 Antibody (C-term) (Cat. #AP17412b) western blot analysis in HL-60 cell line lysates (35ug/lane). This demonstrates the LY96 antibody detected the LY96 protein (arrow).

#### LY96 Antibody (C-term) - Background

This gene encodes a protein which associates with toll-like receptor 4 on the cell surface and confers responsiveness to lipopolysaccharide (LPS), thus providing a link between the receptor and LPS signaling. Studies of the mouse ortholog suggest that this gene may be involved in endotoxin neutralization. Alternative splicing results in multiple transcript variants encoding different isoforms.

#### LY96 Antibody (C-term) - References

Meng, J., et al. J. Biol. Chem. 285(36):27935-27943(2010)  
Gray, P., et al. J. Immunol. 184(11):6359-6366(2010)  
Salvesen, B., et al. Mol. Immunol. 47(6):1226-1234(2010)  
Ohnishi, T., et al. Microbiol. Immunol. 54(2):74-80(2010)  
Xue, Y., et al. Genet. Mol. Res. 9(3):1584-1590(2010)